



### DIMENSIONS

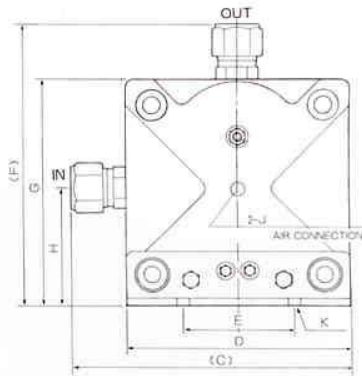
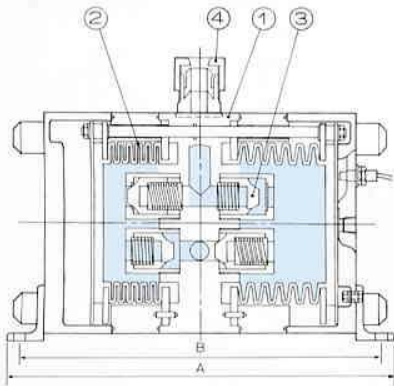
mm

	A	B	(C)		D	E	(F)		G	H	J	K
			SUPER FITTING	SUPER 300 FITTING			SUPER FITTING	SUPER 300 FITTING				
PE-5MA(N)	236	218	158	154	122	50	162	158	126	65	Rc1/4" (NPT1/4")	4-φ9
PE-10MA(N)	284	266	181	178	142	65	186	183	147	76		
PE-20MA(N)	324	304	234	229	184	80	237	232	187	95	Rc3/8" (NPT3/8")	4-φ11
PE-40MA(N)	404	376	304	300	245	120	309	305	249.5	112		
PE-80MA(N)	538	478	342		277	130	359		286.5	129	Rc1/2" (NPT1/2")	4-φ13

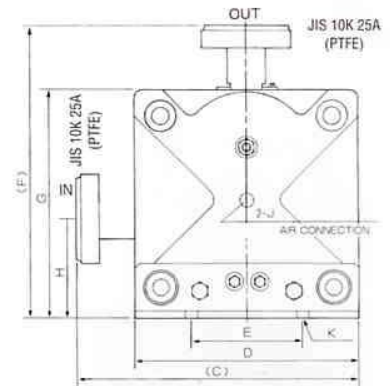
### WET END

No.	PART	MATERIAL
①	BODY	PTFE
②	BELLOWS	PTFE
③	CHECK VALVE	PFA
④	SUPER FITTING or SUPER 300 FITTING	PFA

### PE-5MA(N), PE-10MA(N), PE-20MA(N), PE-40MA(N)



### PE-80MA(N)



Type	PE-5MA(N)	PE-10MA(N)	PE-20MA(N)	PE-40MA(N)	PE-80MA(N)	
Pump connections mm (INCH)	φ10×8 (3/8"×1/4")	φ12×10 (1/2"×3/8")	φ19×15.8 (3/4"×5/8")	φ25×22 (1"×7/8")	JIS 10K 25A FLANGE	
Pump connectors <sup>※1</sup>	SUPER TYPE FITTING or SUPER 300 TYPE FITTING					
Max discharge capacity l/min. (GPM)	7 (1.8)	12 (3.1)	21 (5.5)	52 (14)	82 (22)	
Operating temp. °C (°F)	10~40 (50~104)	41~70 (105~158)	71~100 (159~212)	10~40 (50~104)	41~70 (105~158)	71~100 (159~212)
Supply air pressure MPa (PSIG)	0.2~0.5 (29~73)	0.2~0.4 (29~58)	0.2~0.3 (29~44)	0.2~0.5 (29~73)	0.2~0.4 (29~58)	0.2~0.3 (29~44)
Max discharge pressure MPa (PSIG)	0.45 (65)	0.35 (51)	0.25 (36)	0.45 (65)	0.35 (51)	0.25 (36)
Allowable differential pressure of bellows MPa (PSIG) <sup>※2</sup>	0.3 (44)	0.25 (36)	0.2 (29)	0.3 (44)	0.25 (36)	0.2 (29)
Discharge volume per stroke l/stroke (IN <sup>3</sup> )	0.09 (5.5)	0.21 (13)	0.41 (25)	0.85 (52)	1.69 (103)	
Air consumption Kpa·m <sup>3</sup> /min. (SCFM)	5.1~13.2 (1.8~4.6)	5.1~18.2 (1.8~6.4)	5.1~26.3 (1.8~9.2)	8.1~60.8 (2.8~21)	10.1~65.9 (3.5~23)	
Temperature in atmosphere °C (°F)	10 ~ 50 (50~122)					
Air source connection (INCH)	2-Rc 1/4" (2-NPT 1/4")	2-Rc 1/4" (2-NPT 1/4")	2-Rc 3/8" (2-NPT 3/8")	2-Rc 3/8" (2-NPT 3/8")	2-Rc 1/2" (2-NPT 1/2")	
Weight kg (lb)	4.4 (9.7)	6.7 (14.8)	13.2 (29.1)	26.3 (58.0)	42.5 (93.7)	
Pump size mm	236 <sup>h</sup> ×122 <sup>w</sup> ×126 <sup>d</sup>	284 <sup>h</sup> ×142 <sup>w</sup> ×147 <sup>d</sup>	324 <sup>h</sup> ×184 <sup>w</sup> ×187 <sup>d</sup>	404 <sup>h</sup> ×245 <sup>w</sup> ×249.5 <sup>d</sup>	538 <sup>h</sup> ×277 <sup>w</sup> ×286.5 <sup>d</sup>	

※1. Specific type of end connection when ordering.

# PERFORMANCE CURVE

HQ PERFORMANCE

AIR CONSUMPTION

